

# PRODUCT OVERVIEW

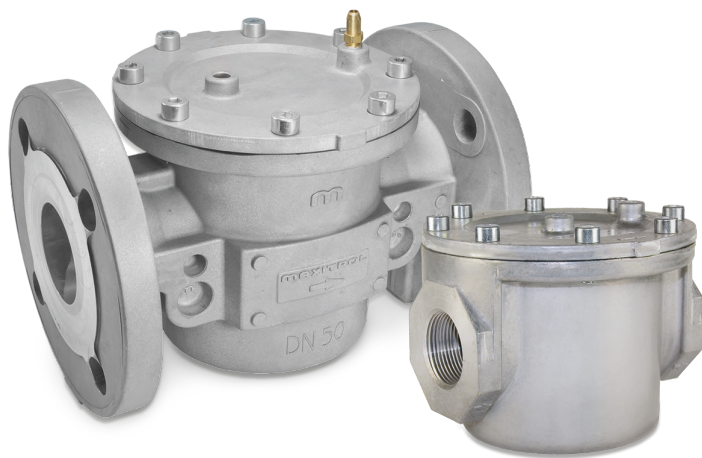
**MAXITROL®**

[www.maxitrol.com](http://www.maxitrol.com)

RVLM, RV, R & RS, 210 AND 325 SERIES ›

**GAS PRESSURE REGULATORS/GOVERNORS**

Poppet, Straight-Through-Flow, Lever Acting, Balanced Valve, Zero Governor, & Pilot Loaded Designs suitable for domestic, commercial, and industrial needs with models for both low and intermediate pressure applications.



HF2000 AND GF1000 SERIES ›

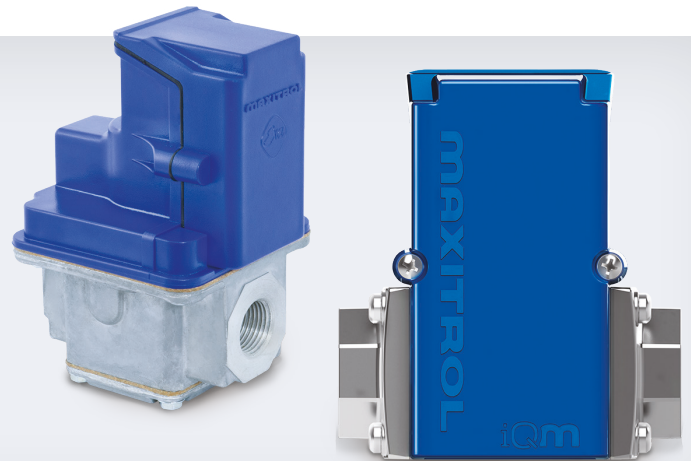
**GAS & AIR FILTERS**

Protect downstream controls from particulate contamination. Applications for the residential, commercial cooking, process heating, and industrial burner industries.

EXA SERIES ›

**MODULATING GAS CONTROL VALVES**

Provide repeatable process control with minimal hysteresis throughout the entire range of modulation. User programmable limits. EXA series operates with linear characteristics and high resolution over a broad range of flow rates. EXA iQM® can be connected to automation communication systems using the Modbus RTU protocol.



SELECTRA ›

**MODULATING GAS CONTROL VALVES**

Provide precise, non-fluctuating, instantaneous temperature control without requiring a motor or mechanically driven butterfly valve.

## GV SERIES ›

### COMBINATION GAS CONTROL VALVES

Comprehensive line of combination gas control systems used to control the pilot and main burner. These unique systems can be customized for use on a wide range of appliances such as space heaters, gas fires, griddle plates, storage water heaters, and ovens. All versions of the GV valve have the same footprint and can be upgraded from a manual control system to a battery operated remote control system.



## GV60 ›

### REMOTE CONTROL SYSTEMS

Maxitrol's myfire Puck™, Symax® programmable handsets, and myfire® App work in conjunction with the GV60 System for gas fires. The app's interactive, colorful graphics make operating a smart phone or tablet simple and fun while giving absolute control of your gas fire.



## GW40/50 SERIES ›

### GAS-WATER COMBINATION CONTROL VALVES

Suitable for use in instantaneous gas water heaters manufactured according to DIN EN 26, fueled with all gas types according to EN 437 and for all common water pressures. The GW Series can be customized to OEM specifications.



## CV SERIES ›

### COMBINATION GAS CONTROL VALVES

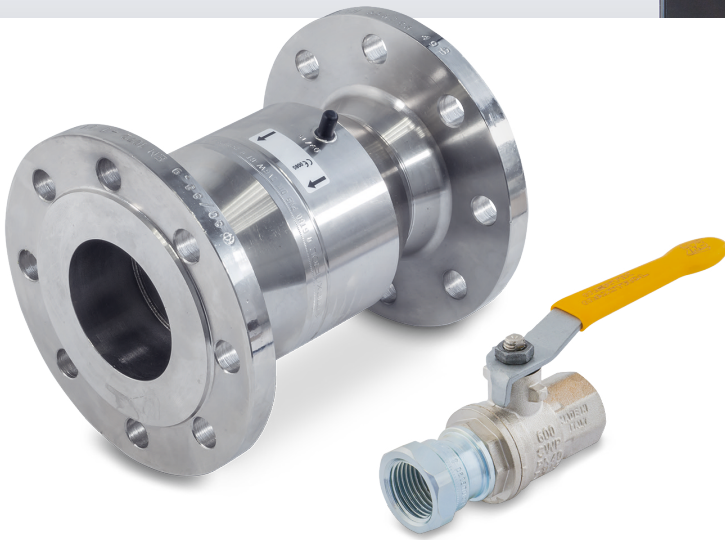
Single and dual solenoid shut-off valves with integrated pressure regulators. Applications include gas boilers, power burners, space heaters, gas fires, and commercial cooking appliances.



E-FLAME ›

**AIR CONTROL SYSTEM**

Battery powered control system used for full automatic control of combustion air in wood and solid fuel stoves. E-Flame enables appliances to run at peak efficiency. In addition to automatic operation, E-Flame can operate the appliance manually with the RF handset.



SENTRY GT SERIES ›

**THERMAL CUT-OFF VALVES**

Help prevent gas from flowing to downstream components that may not be resistant to high temperatures. These thermal cut-off devices automatically shut off the gas flow at temperatures between 92 °C and 100 °C.

SENTRY GS SERIES ›

**EXCESS FLOW VALVES**

Designed to close, shutting off the gas flow, when a predefined flow rate is reached. Gas utilities use them to minimize the risk of damage in the case of a break in the gas line. SENTRY GS are routinely used in underground gas service lines and residential installations throughout the world.



OUR BRANDS ›





## ABOUT US ›

### MAXITROL

Maxitrol is a recognized international manufacturer dedicated to advancing the technology and efficiency of gas controls for today and the future.

Maxitrol's worldwide headquarters is located in Southfield, Michigan, and its European headquarters is located in Thale, Germany.

The two locations combine resources to develop and manufacture products for distribution worldwide.

Over the past 10 years alone, Maxitrol Company has filed more than 60 patents in 25 countries. The companies' manufacturing facilities are located in Southeast Michigan and Thale, Germany, with regional offices in Senden, Germany, and Abercynon, UK.

## SOCIAL MEDIA ›

### LET'S CONNECT

Follow us for updates, interesting articles, company news and product information.



# MAXITROL®

© 2021 Maxitrol GmbH & Co. KG, All Rights Reserved.

## Maxitrol Company

23555 Telegraph Road  
Southfield, MI 48033  
USA

T: (+1) 248 356-1400  
infoNA@maxitrol.com

## Maxitrol GmbH & Co. KG

Warnstedter Str. 3  
06502 Thale  
Germany

T: (+49) 3947 400-0  
infoEU@maxitrol.com

## Maxitrol GmbH & Co. KG

Valleys Innovation Centre  
Navigation Park  
Abercynon CF45 4SN  
United Kingdom

T: (+44) 1443 742-755  
M: (+44) 7866 492-261  
infoEU@maxitrol.com