

## Mertik Maxitrol

### SENTRY GS Excess Flow Valve

### SENTRY GT Thermal Cut-Off Device

## SENTRY GS

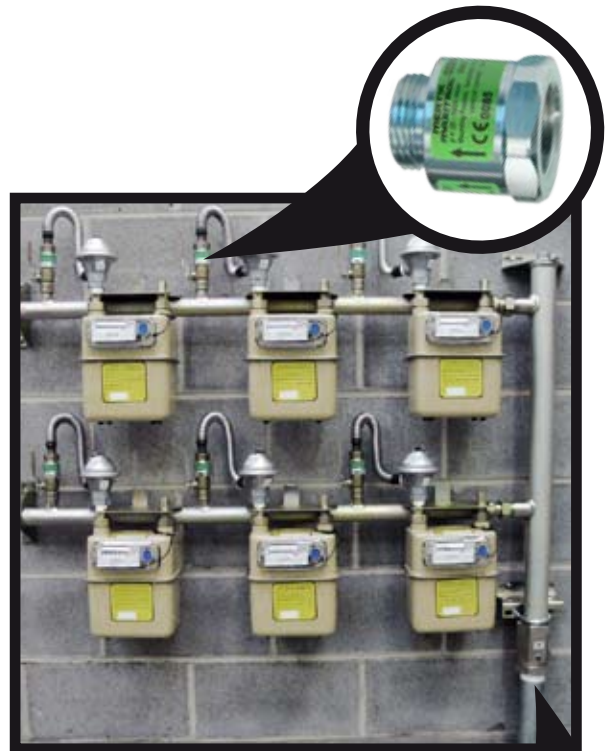
### Excess Flow Valve (EFV)

Mertik Maxitrol's Sentry GS EFV for residential installation shuts off the gas flow when a predefined closing flow rate is reached. Factory adjustment (100%) provides a precise closing flow rate. The EFV remains in a stable, open position in the nominal flow range.

The EFV is installed downstream of the Emergency Control Valve (ECV). Sentry GS EFV is equipped with a by-pass orifice that allows the GS to reopen after the downstream line has been repaired and re-pressurized.

Sentry GS EFVs are certified according to:

- New U.K. IGE/G/5 Gas in Flats and Multidwelling Buildings
- Pressure Equipment Directive 97/23/EC
- DVGW-VP 305-1



## SENTRY GT

### Thermal Cut-Off Device (TCO)

Mertik Maxitrol's Sentry GT TCOs shut off the gas flow at temperatures between 95°C and 100°C. At the release temperature the release mechanism unblocks the shut-off valve. The shut-off valve then moves into the patented contour of the valve seat assuring a lock-tight seal. It remains closed for a minimum of 30 minutes at a temperature of 650°C. The Sentry GT helps prevent gas from flowing to downstream components/sealants that may not be resistant to high temperatures.

Sentry GT TCOs are certified according to:

- New U.K. IGE/G/5 Gas in Flats and Multidwelling Buildings
- Pressure Equipment Directive 97/23/EC
- DIN 3586



# Sentry GS Excess Flow Valves



## Specifications

See details on label attached to Sentry GS

Ambient Temperature: ..... -20°C to +60°C  
 Product Code: ..... METMAXFLOWO.75 (Mertik Maxitrol: GS20FH6LCS)  
 Thread Connection: ..... 3/4" BS 746 thread with washer supplied  
 Nominal Flow Rate VGas (natural gas d=0.6): ..... 6 m³/h  
 Label: ..... green

Type	Type acc. to VP 305-1	Operating Pressure Range	Pressure Drop	Overflow Volume	Installation	Max Test Pressure (GS in open position)
F	K1, K2/M1, M2	25mbar - 5bar	≤ 2.5 mbar	max 30 L/h at 5 bar	between ECV* and service regulator	10 bar

\*Emergency Control Valve

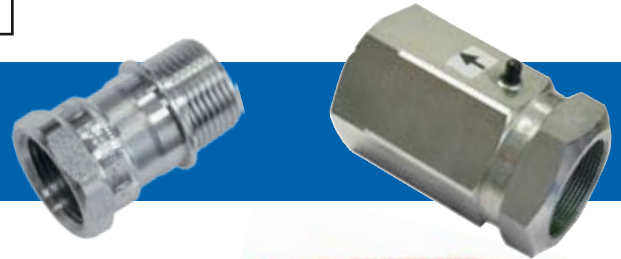
Nominal Flow in m³/h	Pressure drop in mbar
3	0.6
4	1.0
5	1.7
6	2.5

All nominal flow values are in natural gas based on a density of d=0.6

Re-opening the Sentry GS: ..... If the Sentry GS is not directly after the ECV, it may be necessary to wait more than 1 minute for the Sentry GS to reset.

**NOTE:** Open ECV Slowly

# Sentry GT Thermal Cut-Off Device



## Specifications

Gas Types: ..... Suitable for gases according to DIN EN 437  
 Release Temperature: ..... +100°C +0/ - 8K  
 Nominal Pressure: ..... MOP 5 (PN 5)  
 Max. Ambient Temperature (GT open): ..... +80°C  
 Allowable Leakage: ..... < 30 L/h  
 Housing Material: ..... Steel  
 Connections: ..... Pipe Threading according to EN 10226 (ISO 7-1)  
 ..... Flanged Connection according to EN 1092 (ISO 7005-2, PN16)  
 Label: ..... Red Tie-On Tag

Sentry GT Thermal Cut-Off Device

**NOTE:** It is the responsibility of the installer to attach the red identification tag (if required) to the Sentry GT thermal cut-off device.

## Models / Dimensions

Order Code	Pipe Size	Inlet		Outlet		Surface Coated	Dimensions / mm			Weight / kg	Cert. No.
		Internal	External	Internal	External		L1	L2	SW		
METMAXTHERMO.75 (Mertik: GT20 DIA)	DN 20 (3/4")	I	A	x	51	34	32	0.10	CE-0085BN0394		
METMAXTHERM1 (Mertik: GT25 DIA)	DN(1")									53.8	34.6
METMAXTHERM2 (Mertik: GT50 II)	DN50 (2")	I	A	x	135	-	80	2.60	CE-0085BN0395		